

SaHELI

ACNE & PIMPLE

CARE SOAP

- ✓ Pimple care soap with the orange perfume
- ✓ The acne care soap



Why Saheli Soap ?

- ✓ Pimple and skin care 76% TFM Grade 1 soap in 75 gm box pack.
- ✓ Made with 7 premium skincare contents like Zinc Oxide, Talcum Powder, Jojoba Oil, Tea tree oil, Etc.
- ✓ Helpful in Pimple & Black Marks, Anti Bacterial & Anti Fungal and Skin Glow.





SaHELI

ACNE & PIMPLE

CARE SOAP

To look more youthful,
you need a
good skincare system
that's effective,
and straightforward

Key Ingredients :



**Tea Tree
Oil**



Allantoin



Jojoba Oil



**Talcum
Powder**



Triclosan



**Chlorhexi-
dine**



**Zinc
Oxide**



**Soap
Noodles**



**Gluconate
Solu.
(20 % w/v)**

Types of Pimples



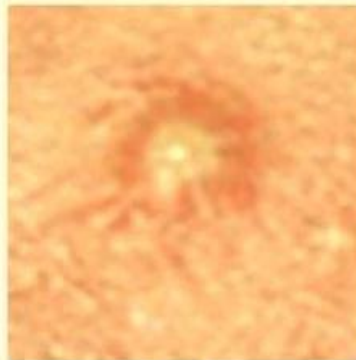
milia



nodule



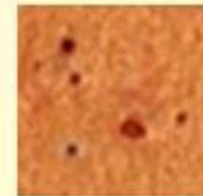
popule



postule



**White
head**



Black head

Saheli

ACNE & PIMPLE

CARE SOAP

75 gm




Thank you