



## Natural Cure For Itching

- ✓ The Khujli – Go formula enriched with 7 herbs
- ✓ Precious cream base with cooling – soothing effect

15 gm



## Why Itchi Care Cream ?

- ✓ Khujli-Go formula based cream with cooling and soothing effect.
- ✓ 15gm Big pack with hanging box.
- ✓ Made with 7 itching care herbs like Sandal Oil, Tankan, Sarsaparilla, Gulab Phool, Etc.
- ✓ Helpful in Dry & wet eczema, Heinz fungal infection, Psoriasis & ringworm, Widely used for all types of dermatitis.

For the use of regd. Medical practitioner only



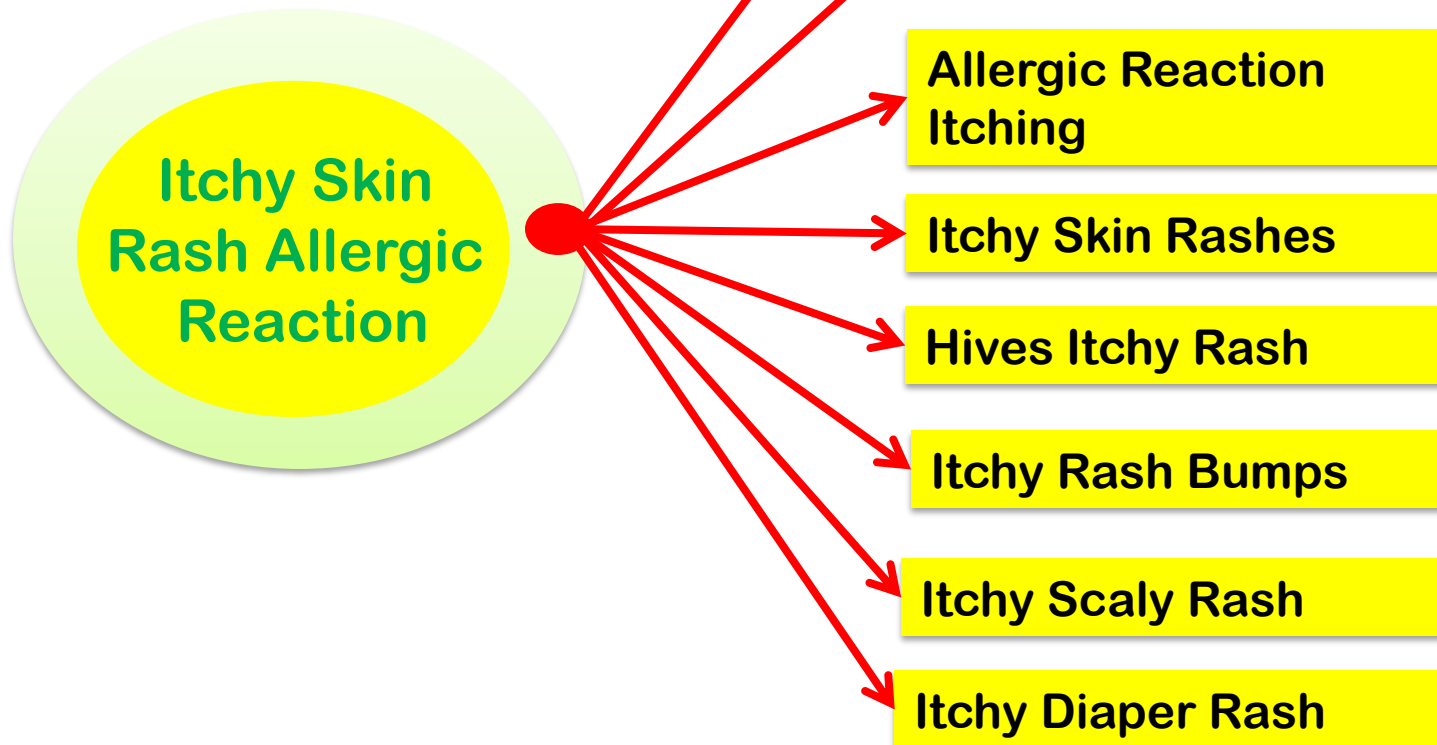
## Contains :

**Composition : Ext. Derived From :**

<b>Tankan</b>	<b>02.00 % w/w A.B.</b>
<b>Sandal Oil (Santalum Album)</b>	<b>00.05 % w/w A.B.</b>
<b>Gulab Phool (Rosa Centifolia)</b>	<b>17.00 % w/w A.B.</b>
<b>Banyan Tree (Ficus Bengalensis) ST. BRK</b>	<b>03.00 % w/w A.B.</b>
<b>Cows Milk Powder</b>	<b>02.00 % w/w A.B.</b>
<b>Till Oil (Sisamum Indicum)</b>	<b>02.00 % w/w A.B.</b>
<b>Indian Berbery (Desi Baval)</b>	<b>03.00 % w/w A.B.</b>
<b>Sarsaparilla Root (Hemidesmus Indicuss)</b>	<b>03.00 % w/w A.B.</b>



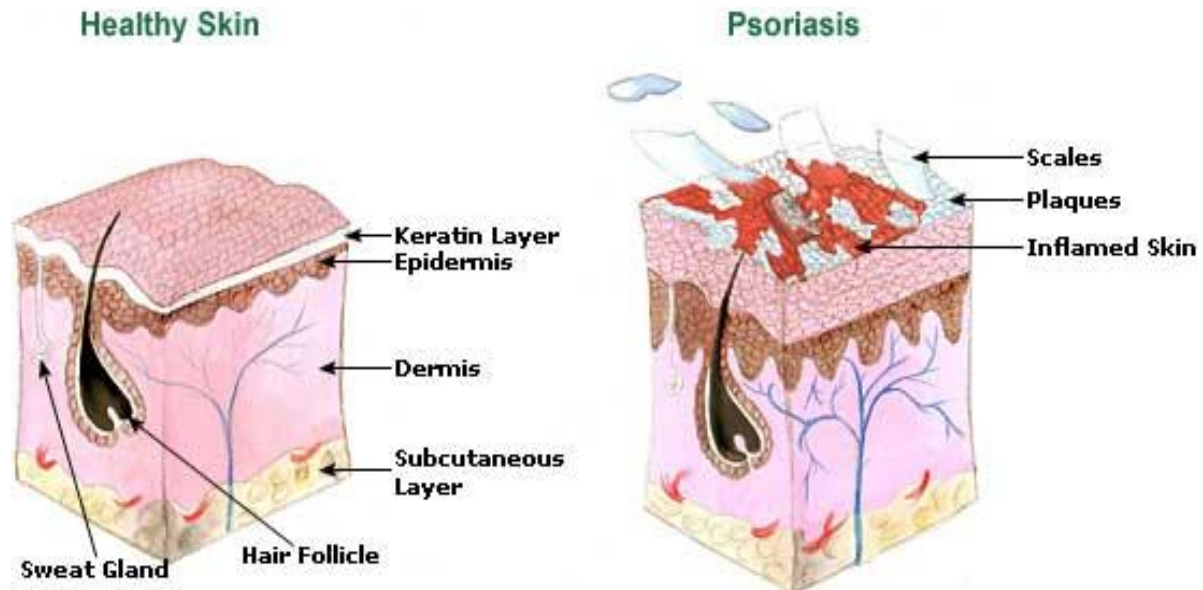
## Types Of Itching





## Different Itching area's of Skin

### Difference Between Healthy Skin And Disorder Skin





15 gm



For the use of regd. Medical practitioner only